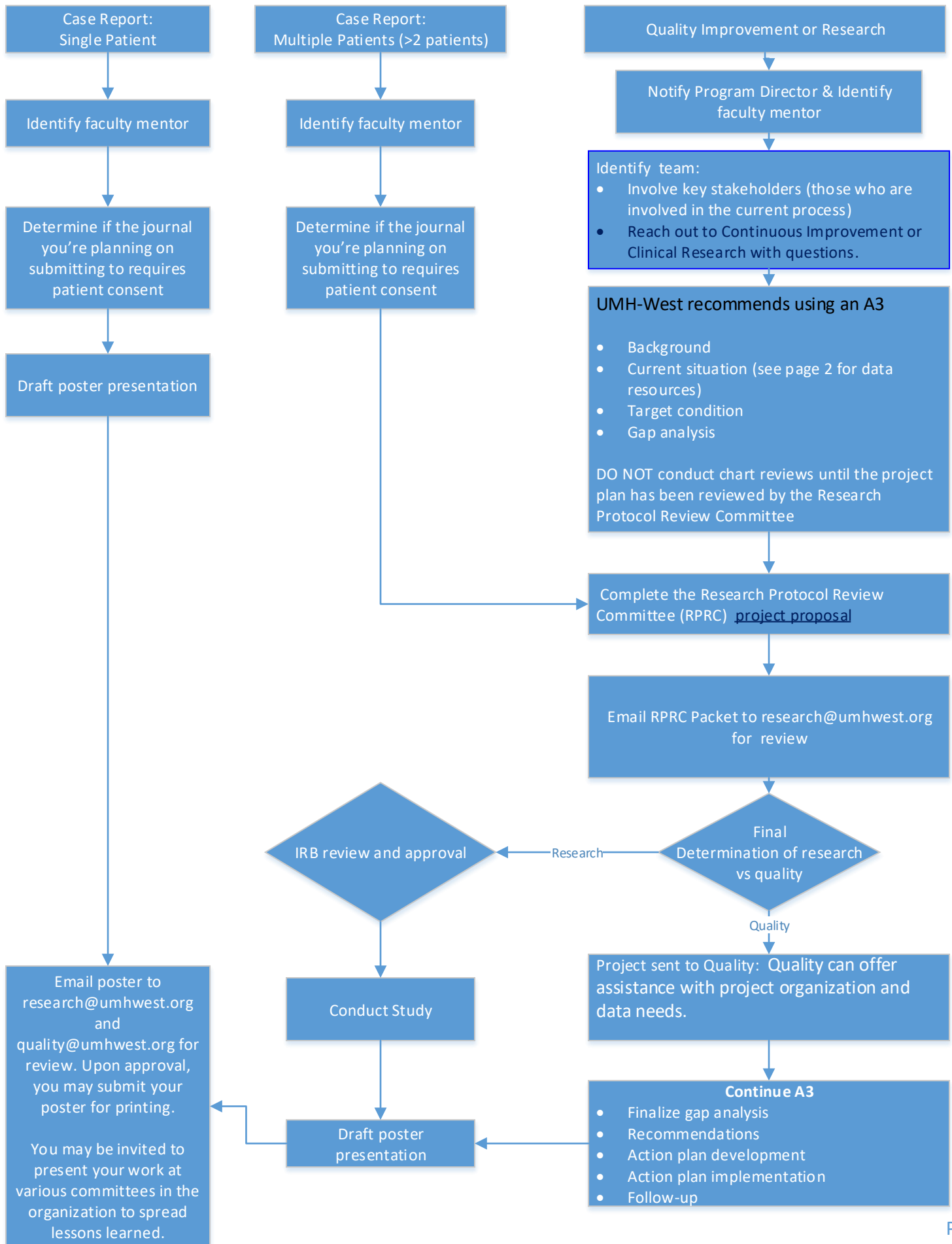


Process for Resident QI, Research, and Case Reports

Last Updated: May 24, 2022
 Approvals: Resident QIPS, GME Comm.,
 Clinical Research, VP Quality/Safety



	Key Resource(s)	Considerations for Use
Report-Based Data Collection	<ul style="list-style-type: none"> Investigate existing reports with department/service line-based professionals/Blue Cross Blue Shield Collaboratives Fill out data request form (EDIS M-Net page) Slicer Dicer 	Consider using this data collection approach if any of the below apply: <ul style="list-style-type: none"> Multiple, more complex data points are needed Data is in discrete fields in the medical record Data is claims-based
Manual Data Collection	Consider using: <ul style="list-style-type: none"> Frequency chart/pareto chart (template on Continuous Improvement M-Net page) Tally Time Study Survey (if using Survey Monkey, Chris Maldonado has a UMH-West account) Chart review and standardized review form/excel workbook 	Consider using this data collection approach if any of the below apply: <ul style="list-style-type: none"> There are a few key data points being investigated Data needs are centered around feedback from key stakeholders/stakeholder experiences with a particular process Data is not in discrete fields in the medical record Human interpretation of medical record data is needed during the data collection process
MSU SCS Resources	Support services are available to augment your ongoing project planning, conduction, and dissemination activities.	Complete scholarly activity request form: https://scs.msu.edu/sa/supportservices/ Contacts: Bill Corser, PHD, RN: corser@msu.edu Sam Wisniewski, MS: samw@msu.edu
Library	https://mnet.umhwest.org/departments/library/	Mary Loftis (Mary.Loftis@umhwest.org) is available intermittently as a resource.
UMHW Resources	Tracy Koehler, PhD <ul style="list-style-type: none"> tracy.koehler@umhwest.org 	Scholarly activity support and project development including developing question, RPRC and IRB submissions, statistical assistance/data analysis, abstract development, poster/podium development, manuscript development, journal club presentation preparation.
	ReQIPS Committee Coordinator: deborah.disler@umhwest.org Faculty: adam.wolfe@umhwest.org Quality & P.S.: brooke.siepierski@umhwest.org Research: cindy.karl@umhwest.org	Can attend a meeting or request your residency representative to bring any questions or concerns.
Michigan Medicine	Mentoring program	Pilot program as of Spring 2022. More information to come.